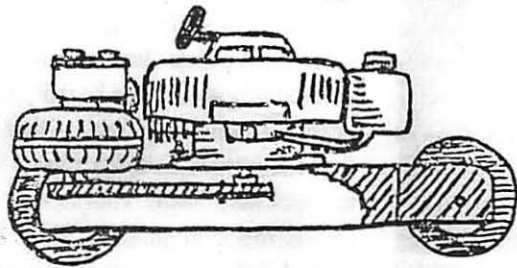
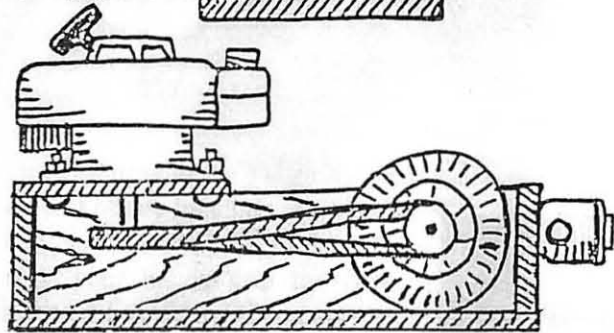
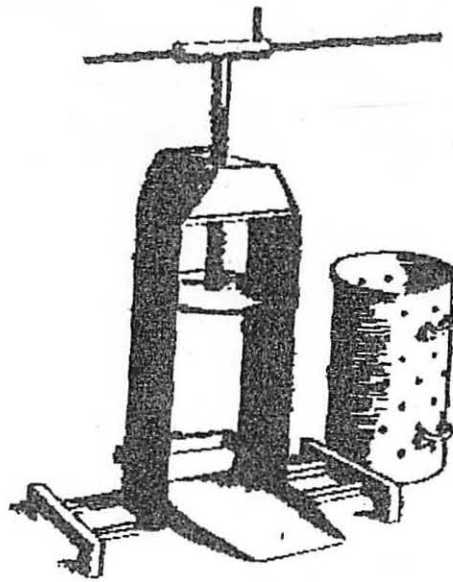
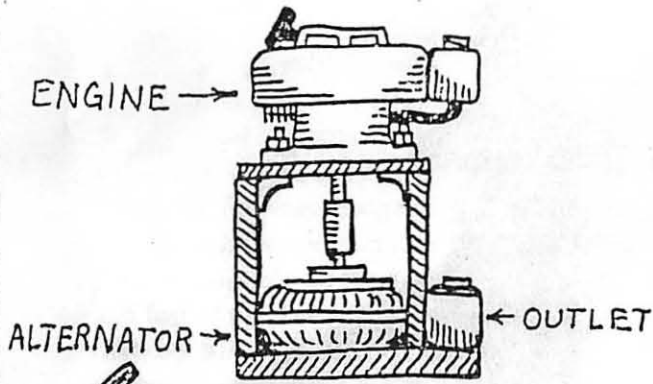
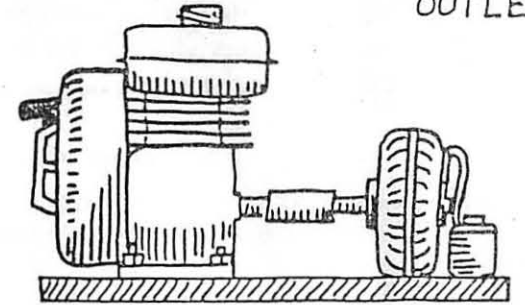
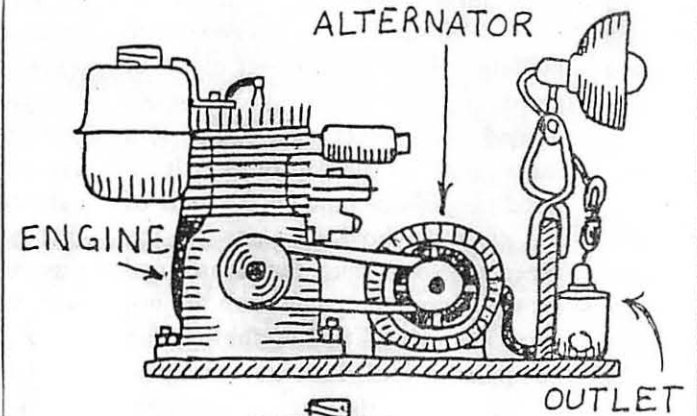


VERTICAL MOUNTS



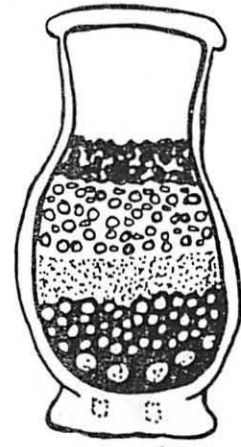
OLD MOWER
PLATFORM

HORIZONTAL MOUNTS



WATER FILTER

A cheap, useful form of water filter is the following. "Take any common vessel, perforated below, such as a flower pot, fill the lower portion with coarse pebbles, over which placed a layer of finer ones, and on those a layer of coarse sand. On top of this place a piece of burnt clay which has been perforated with small holes and on this put a stratum of 3-4 inches of burnt, pounded, animal charcoal. A filter thus formed will last a considerable length of time and will be found useful in removing noxious and putrescent substances held in solution by water.



RD-C-11